

Muro colado en Plaxis 2D

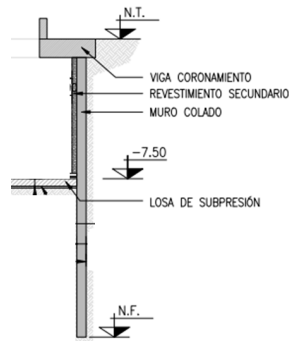
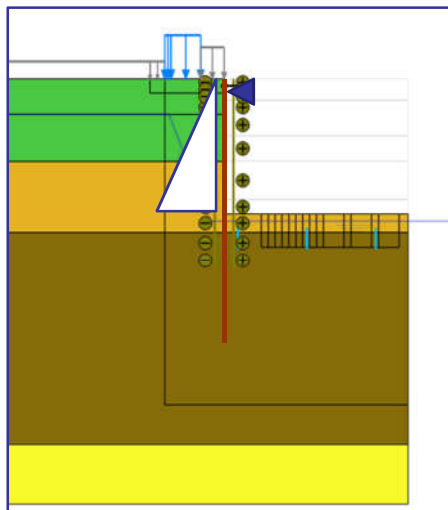
Ing. Francisco J. Iglesias
SRK Consulting (Argentina)

latam.srk.com

figlesias@srk.com.ar

Modelo de un muro colado

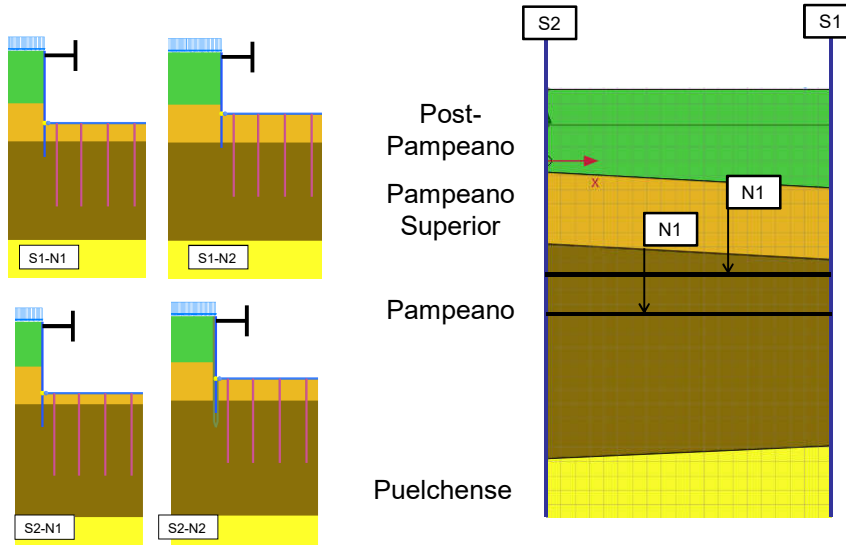
Modelado de muro colado para determinación de ficha óptima



Definición de escenarios



Modelo de un muro colado

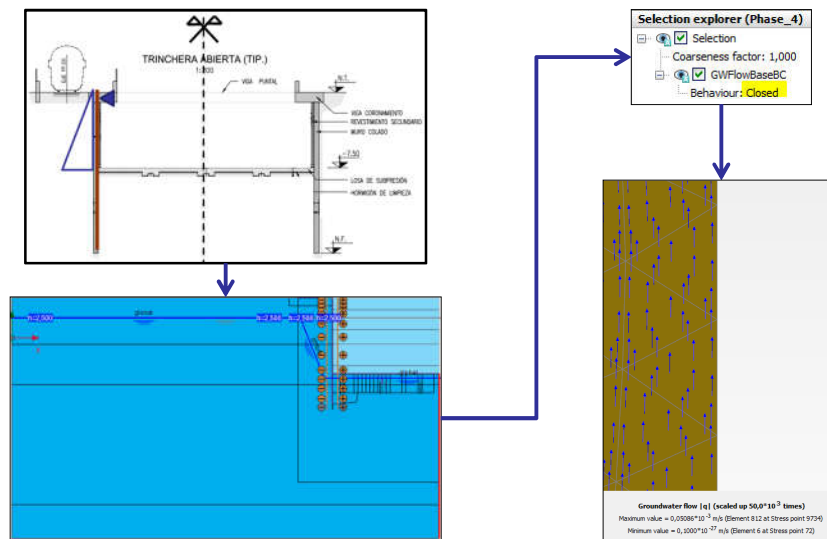


3

Condiciones de contorno



Modelo de un muro colado



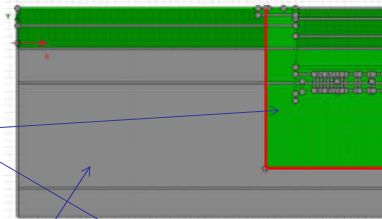
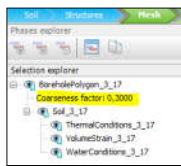
4

Refinamiento de malla en zonas de alto gradiente de desplazamiento

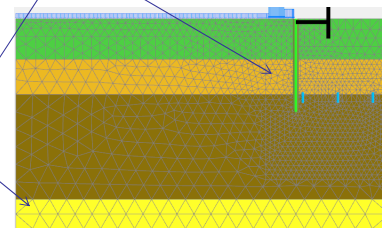
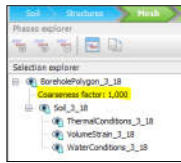


Modelo de un muro colado

- Elementos chicos cerca de estructuras



- Elementos grandes cerca de los bordes

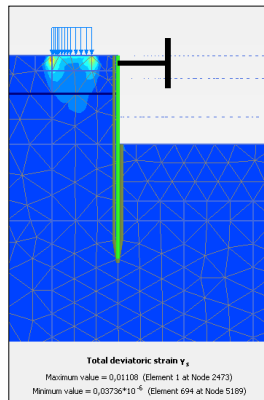


5

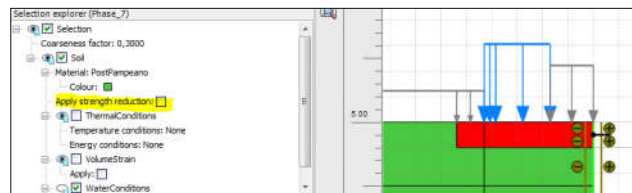
Control del modelo: fallas locales



Modelo de un muro colado



Numerical control parameters	
Max cores to use	256
Max number of steps store	1
Use default iter parameters	<input type="checkbox"/>
Max steps	1000
Tolerated error	0,01000
Max unloading steps	5
Max load fraction per step	0,5000
Over-relaxation factor	1,200
Max number of iterations	60
Desired min number of iter	6
Desired max number of iter	15
Arc-length control type	Off
Use line search	<input type="checkbox"/>
Use gradual error reducer	<input type="checkbox"/>



6

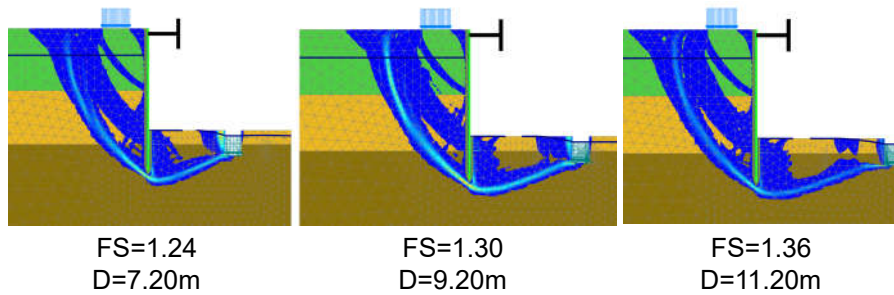
Interpretación de resultados



Modelo de un muro colado

- Sintetizar
- Identificar tendencias
- Encontrar desvíos

FS	S1N1	S1N2	S2N1	S2N2
Sin sobrecarga	1.69	1.65	1.81	1.73
L1 (tren)	1.63	1.49	1.72	1.63
L2 (calle)	1.66	1.59	1.75	1.65



7

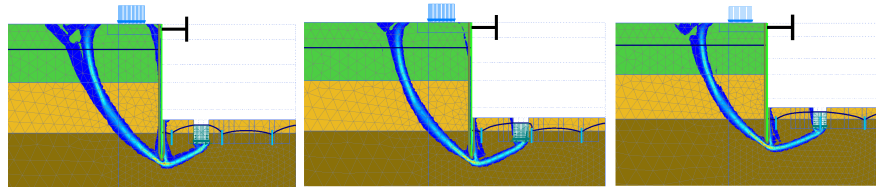
Efecto de la posición de una zanja



D=3.20m – FS =1.31

D=4.20m – FS =1.31

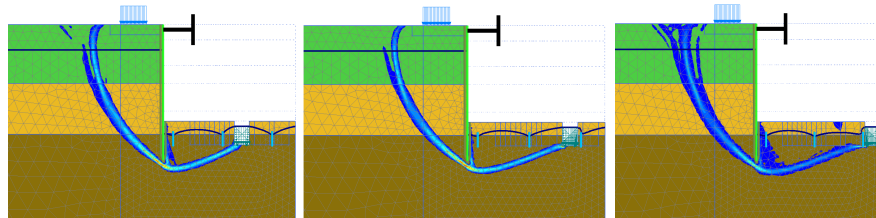
D=5.20m – FS =1.32



D=7.20m – FS =1.36

D=9.20m – FS =1.42

D=11.20m – FS =1.49



Condensar modelos



Modelo de un muro colado

Representar varios escenarios en **un solo modelo**

- Minimiza fuentes de error
- Simplifica extracción de resultados

